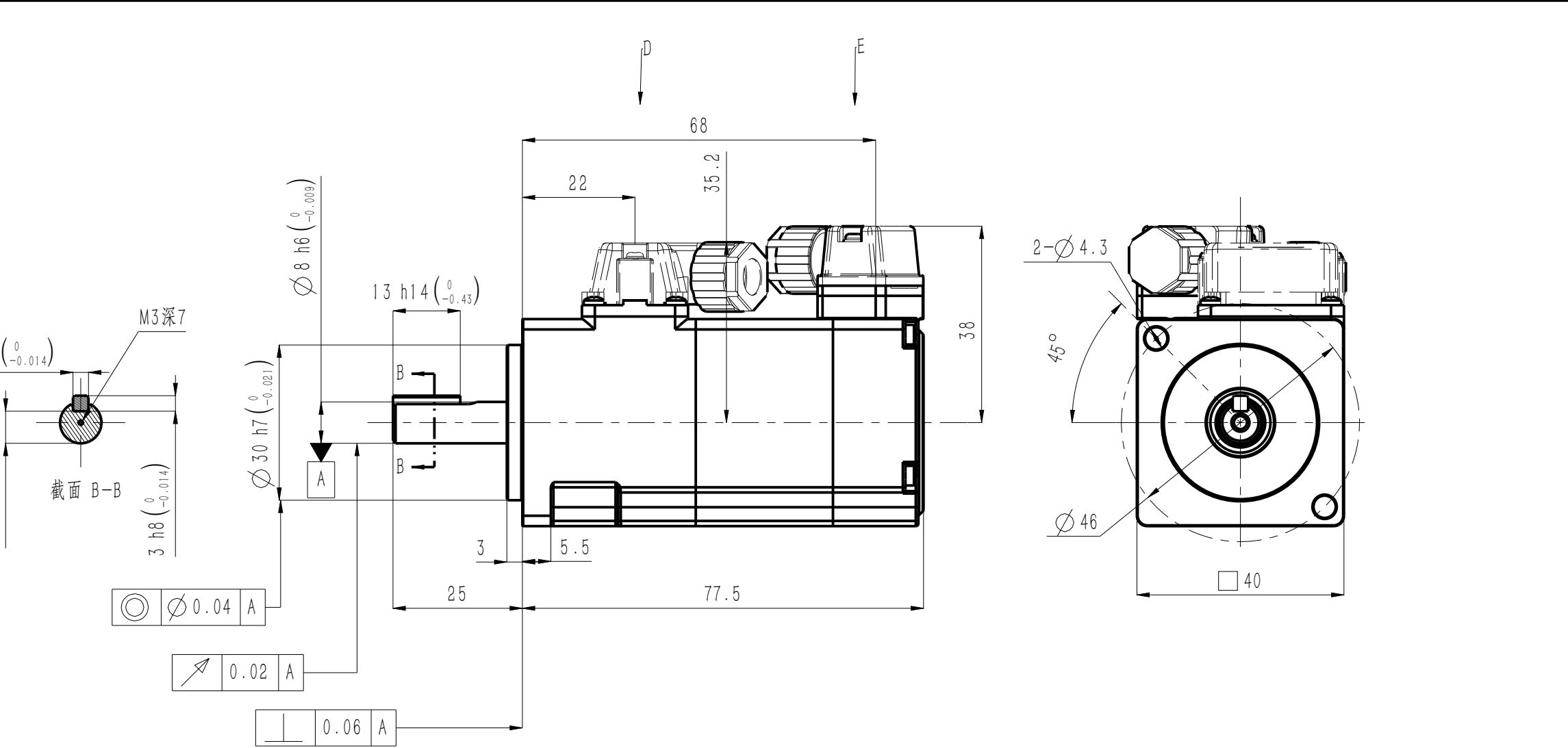


| | |
|------------|--------------------------------|
| 版本 Edition | 变更内容 Description of the change |
| C | 模板更新 |



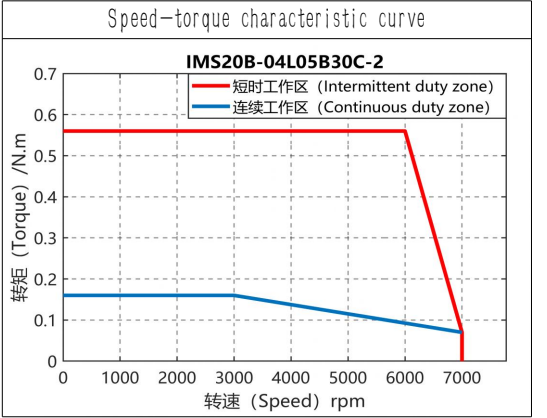
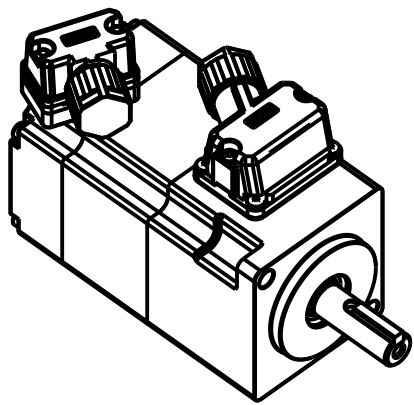
| 抱闸参数 Brake parameters | | |
|---------------------------|-------------------------------------|------|
| 额定电压 Rated voltage | 24±10% | V DC |
| 额定功率 Rated power | 8 | W |
| 电阻(20℃) Resistance | 72±7% | Ω |
| 额定扭矩 Rated torque | 0.32 | N·m |
| 释放电压 Release voltage | >1.5 | V |
| 吸引电压 Pickup voltage | <16.8 | V |
| 吸合时间 Pickup time | <50 | ms |
| 释放时间 Release time | <20 | ms |
| 回转间隙 Rotational Clearance | <1° (20%额定扭矩) (20% Rated torque) | |


| 电机技术参数 Motor parameters | | |
|--------------------------------------|---|--------------------|
| 额定电压 Rated voltage | 220 | V AC |
| 额定功率 Rated power | 0.05 | kW |
| 额定扭矩 Rated torque | 0.16 | N·m |
| 峰值扭矩 Peak torque | 0.56 | N·m |
| 额定电流 Rated current | 1.2 | Arms |
| 峰值电流 Peak current | 4.8 | Arms |
| 额定转速 Rated speed | 3000 | rpm |
| 峰值转速 Maximum speed | 7000 | rpm |
| 扭矩系数 Torque constant | 0.14 | N·m/Arms |
| 反电势常数 Back EMF constant | 9.4 | V/krpm |
| 线电阻 line resistance | 5.76 | Ω |
| 线电感 line inductance | 5.05 | mH |
| 转动惯量 Moment of inertia | 0.021±10% | kg·cm ² |
| 轴向允许载荷 Axial allowable load | 54 | N |
| 径向允许载荷 Radial allowable load | 78 | N |
| 极对数 Number of pole pairs | 5 | 对 |
| IP防护等级 Ingress Protection Rating | IP67 | |
| 绝缘等级 Insulation class | F | |
| 绝缘电阻 Insulation resistance | >100MΩ DC500V | |
| 电机重量 Motor weight | 0.4 | kg |
| 工作温度 Operating temperature | -20℃~40℃ | |
| 工作湿度 Operating humidity | 20%~80% (不结露 Non-dewfall) | |
| 推荐安装海拔 Recommend installing altitude | <1000m(1km以上降额使用) (Derate for use above 1km) | |



| 动力端子规格 Power connector | 标准款引线定义 Wiring definition without brake | | | | | |
|------------------------|---|---|---|---|---|---|
| SC-MC6P-AP2G-051 D | 1 | 2 | 3 | 4 | A | B |
| | A | B | | | | |
| 动力端子规格 Power connector | 抱闸款引线定义 Wiring definition with brake | | | | | |
| SC-MC6P-AP2G-041 D | 1 | 2 | 3 | 4 | A | B |
| | A | B | | | | |

| 信号端子规格 Encoder connector | 编码器规格 Connector specifications | 引线定义 Wiring definition | | | | | | |
|--------------------------|---|------------------------|---------|----------|----------|---------|--------|--------|
| SC-MC7M-A60G-180 E | 17-bit magnetic encoder 23-bit optical encoder | 1 | 2 | 3 | 4 | 5 | 6 | 7 |
| | | SD+ (白) | SD- (棕) | BAT+ (蓝) | BAT- (黄) | +5V (红) | 0V (黑) | PE (绿) |



| | | | | | | | |
|-----|-------------|-----|------------------------------|--|---------------------------------------|-------------|---|
| SN | 料号 P/N | | 整机型号 Model and Specification | | 编码器 Encoder | | |
| 1 | 11101-01621 | | IMS20B-04L05B30C-2-M45-AUL | | 17位多圈磁编 | | |
| 2 | 11101-01608 | | IMS20B-04L05B30C-2-P95-AUL | | 23位多圈光编 | | |
| | | | | 深圳市英威腾电气股份有限公司 Shenzhen INVT Electric Co., Ltd. | | | |
| C | 替换 | / | 20260203 | | | | |
| B | 新归档 | / | 20250826 | 名称 | 电机外形图 Motor outline dimension drawing | | |
| 版本 | 更改方式 | 更改人 | 日期 | | | | |
| 设计 | / | | | 料号 | / | 材质 | / |
| 校核 | / | | | | | | |
| 工艺 | / | | | 图号 | / | 投影标识 |  |
| 审核 | / | | | | | | |
| 标准化 | / | | | 重量 | / | 比例 | 1:1 |
| 批准 | / | | | | | 第 1 页 共 1 页 | |